

# High School

## Capital Project Update



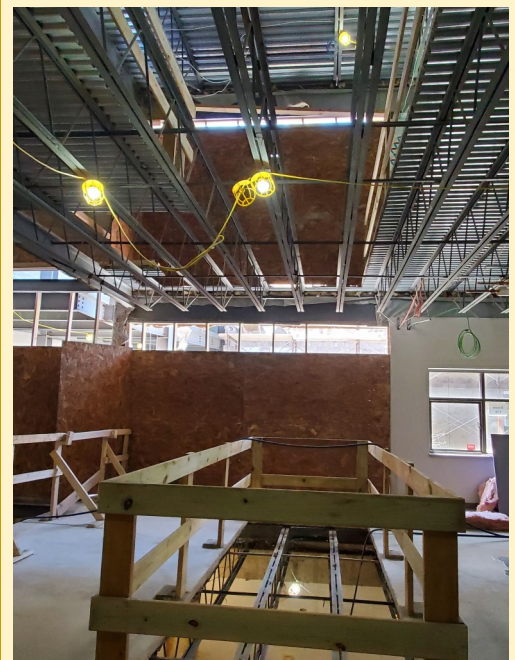
Brick repointing to repair deterioration on the High School chimney was planned as part of the District's Capital Project.

Once workers got to the top and looked inside, however, they also found deteriorated brick on the interior.

On these hot summer days, workers have been scaling up and down, inside and out, of the chimney to do the repair work.



The new High School addition continues to take shape, above. It's not as easy as just adding on another section of building, however. The old inside has to be adjusted to align with the new inside. Hence, below left, the a previous 2-story stairway had to be removed and, below right, a new two-story stairway will be constructed.



JULY 7, 2020 UPDATE